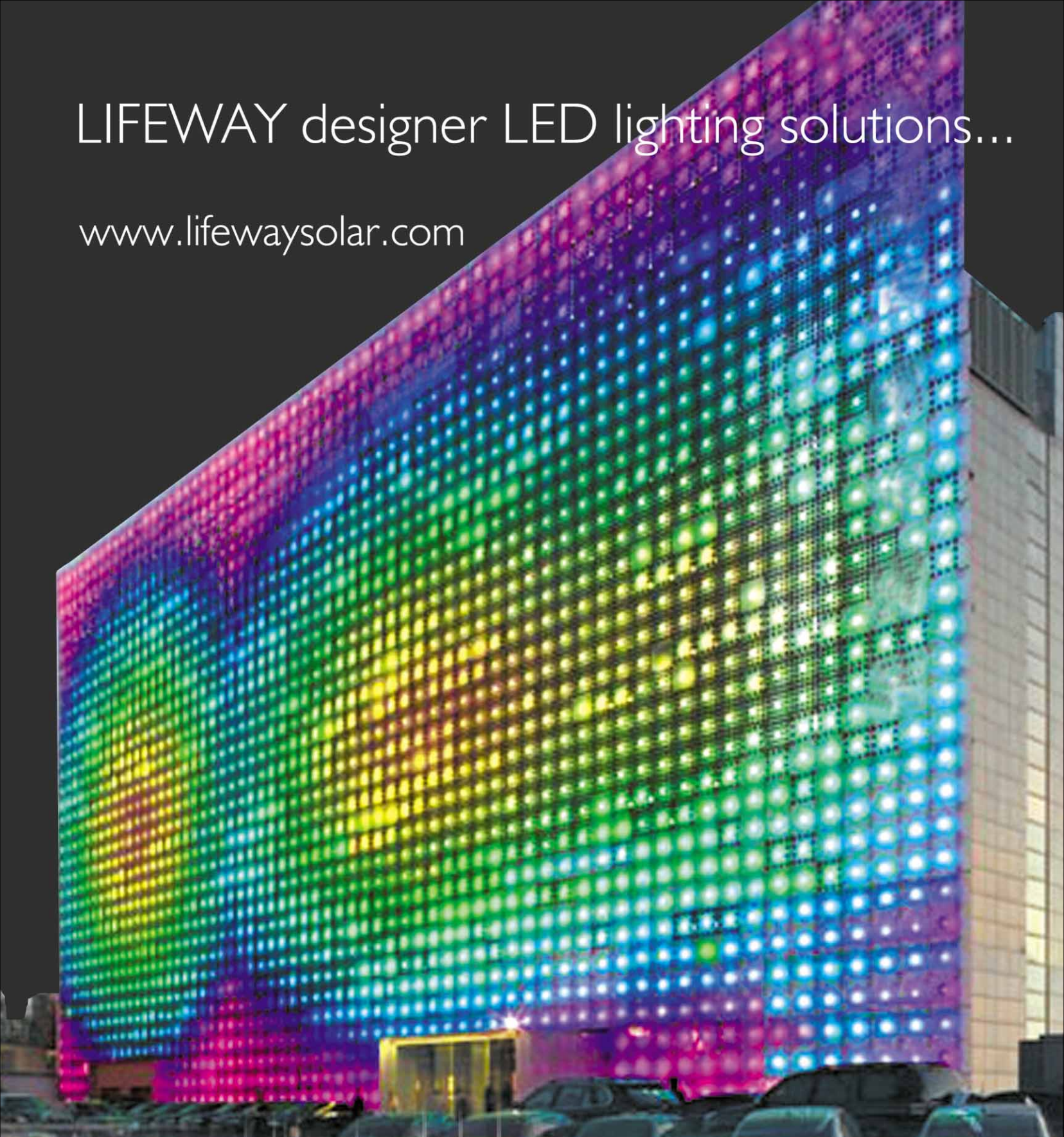
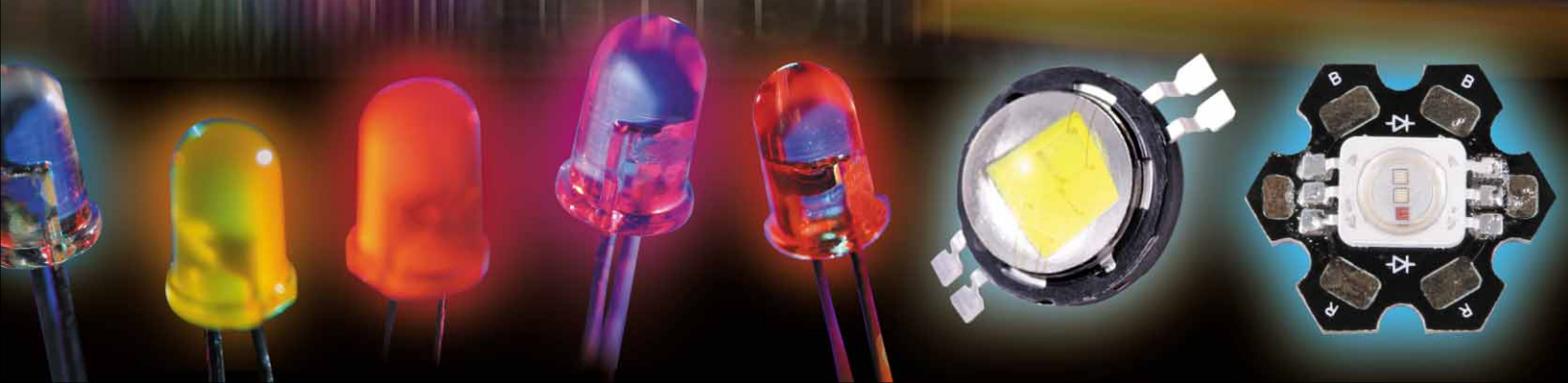


LIFEWAY designer LED lighting solutions...

www.lifewaysolar.com

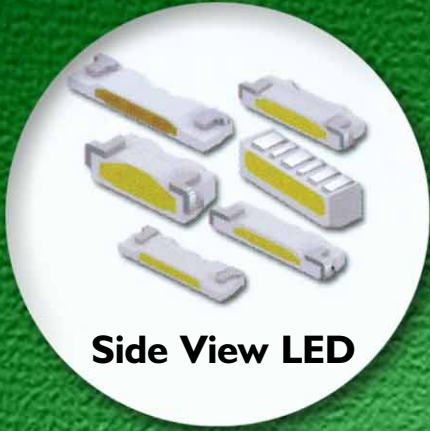


Way of life to LEDs...





www.lifewaysolar.com



Side View LED



Z - Power LED



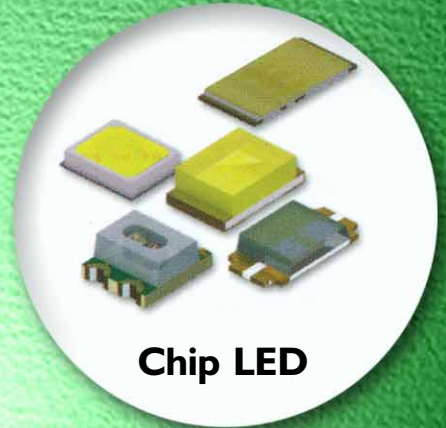
Top View LED



Lamp LED



Acriche



Chip LED



High Flux LED



Dot Matrix

Think aGain

Use LED ...

Conserve Energy...

Save Earth...



For the sustenance of a Green Planet for our coming generations we have to fight the present challenges of global warming and climate change. Energy conservation is our mantra today to limit the usage of fossil fuels. We have to prevent pollution of Air, water, land and also destruction of forests and other natural resources. Over a period of time, we have realized that the incandescent bulbs and florescent tubes are consuming MORE POWER, produce HEAT and have LESS LIFE SPAN .These conventional lights contributes 8% of the heat towards global warming. CFL has comparatively become a better option with regard to the above mentioned problems. But due to its Ultra Violet rays, reasonable heat and power consumption it became inferior to LEDs. Hence LEDs HAVE BECOME THE FUTURE LIGHTS.....

Our brand name LIFEWAY is the pioneers in LED lighting industry, since 2001. We import LEDs and SMDs and also manufacture custom designed LED lights in Kerala. We have an excellent range of LED based fixtures which are designed with excellent quality as per the Indian standards and requirements. Our products are suitable for both indoor and outdoor usages .We also have an exclusive range of Energy Saver Fixtures, starting from 2 watt LED bulbs to 25 watt industrial lightings.

Now it has became eminent that an incandescent bulb or Tube light or CFL can never maintain its place as future luminaries. LEDs are much more reliable, long lasting and economical than any other light sources. Soon LEDs will be replaced as the main lighting source for house hold and industries. LEDs have already entered in to the automobile industry and in the near future it will make an entry into the lighting of highways, stadiums and operation theaters etc...

We are proud of our strong and excellent nationwide distribution network and a good supply chain. We are striving hard to achieve great heights in the LED market. We always provide any kind of technical assistance for our distributors and also ensure utmost satisfaction of our clients.

LIFEWAY strongly believes that, LEDs are the ultimate source of lighting in the coming centuries. With pride and confidence, we strongly recommend you all to enter the world of LEDs. This is an environment friendly product and will help to maintain our Earth Green. SAVE POWER.....SAVE EARTH.



sun driven

What are LEDs...?

A Light-Emitting Diode (LED) is a semi conductor diode that emits incoherent narrow spectrum light when electrically biased in the forward direction of the P - N junctions .This effect is a form of electro luminescence.

An LED is usually a small area source, often with extra optics added to the chip that shapes its radiation pattern. The color of the emitted light depends on the composition and condition of the semiconducting material used, and can be infrared , visible, or near-ultraviolet. An LED can be used as a regular household light source.

A solid-state device (diode) that emits light of a single primary color, but in combination with other diodes can produce colors of any hue for use in signage. These devices each of which is about one centimeter (half-inch), have remarkably long life.

The advantages of LEDs are...

Energy Efficiency

LEDs consume far less energy than standard light bulbs, leading to greatly reduced energy costs. LEDs also require far less energy to manufacture than other light sources ,reducing the environmental impacts of artificial lighting still further.

Long Life

The typical working life of an LED is several thousand hours. Most incandescent bulbs expire after just a couple of thousand hours ,in the case

of domestic bulbs and in as little as a few tens of hours for torch bulbs. LEDs has no ignition problems while working under a harsh condition of -400C to + 450 C.

Reliability

The filament in a normal bulb is a very fragile object, easily broken by a sudden shock or "soft" drop. An LED is encased in virtually unbreakable high strength optical grade resin. There is no glass or filament to break, making LED light sources perfect for rugged or demanding environments or installations where access is difficult.

Economy

Despite their apparent initial high price , the use of LED lighting can offer significant savings in the long term, particularly in terms of reduced energy and maintenance costs .

Environment Friendly

Switching to low energy, solid state lighting benefits the environment. The low power requirements of LED light sources make them ideal for solar or wind powered installations

Better Safety and Security

The low level of heat produced and low voltages used by LEDs make them a far safer source of light. No glass to break, no hot filament ,no gas or candle flames and no noxious fumes.

Warning

Ultra bright LEDs are high intensity light sources Do not stare directly in to the beam, as dazzling will occur and damage to the eyes may result from prolonged exposure.





INDEX

Multi Purpose LED luminaires	6
LED Backlight Modules	8
LED Path Light	11
LED Foot Light	13
LED Stair Light	15
LED Spot Light	18
LED Down Light	22
LED Decorative Light	25
LED Wall Lamps	26
LED Outdoor Fixtures	29
LED Blitz Lights	31
A comparative study	32

Multi Purpose LED luminaires



LWS 101



LWS 102



LWS 103



LWS 104



LWS 105



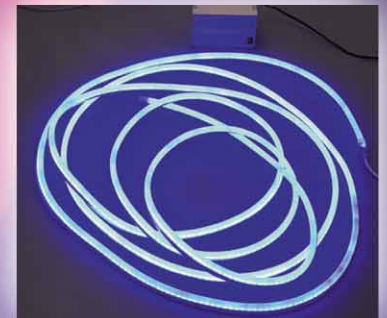
LWS 106



LWS 107



LWS 108



LWS 109



LWS 110



LWS 111



LWS 112



LWS 113



LWS 114



LWS 115

Multi Purpose LED luminaires



LWS 116



LWS 117



LWS 118



LWS 119



LWS 120



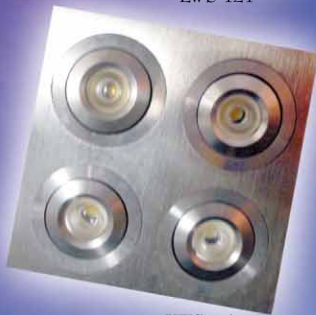
LWS 124



LWS 125



LWS 126



LWS 127



LWS 128



LWS 129



LWS 130



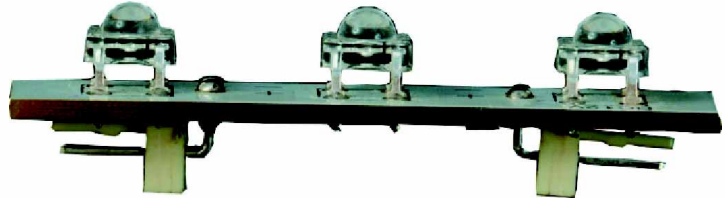
LWS 131



LWS 132



LED BACKLIGHT MODULES



Features:

- Available in 3 LEDs version with connector points.
- Low heat, high brightness works well under harsh conditions.
- It can be normally operated and never be colour fade.
- Connected by series using connector wire.
- LED used in wider degree emitting angle of 120° to achieve even distribution of light.
- Input voltage : 12 V DC.
- Low Power Consumption, 0.5W/20 - 90 mA per piece.
- Energy efficient, long lifetime, virtually no maintenance.

Applications:

- Indoor Channel letters backlighting.
- Advertisement signs backlighting for indoor use.
- Advertisement light boxes and billboards backlighting.



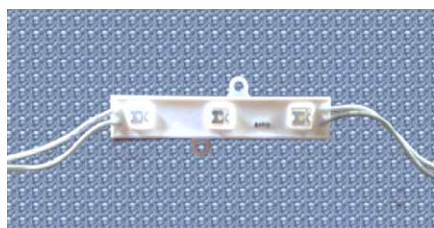


LED BACKLIGHT MODULES

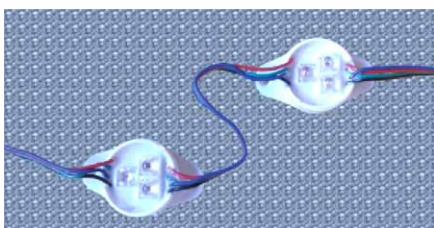
These backlighting module are made by high bright Superflux LEDs and is very versatile at a length of 77 X 15 X5mm, whereas the round RGB modules are 49 X 29Ømm dimensions. We are applying our innovative waterproofing system into our Superflux LED modules, so that you can use these modules both indoor and outdoor applications.

This LED Modules emits heat at a very low intensity that is not considered as a fire hazard while performing the maximum output with harsh conditions of -40°C to +45°C. In the same time this Modules have a lower power consumption compare to the other backlighting products that is currently in use while giving a bigger life span in the same.

LIFEWAY backlighting Modules have three different models with rectangular, round and square shapes. The housing of the modules are made Aluminum and PVC materials and also designed as suitable for multipurpose use.



LWS 133



LWS 134



LWS 135

Features:

- Available in 3LEDs version.
- With mounting holes for easy mounting
- Low heat, high brightness works well under harsh conditions
- It can be normally operated even in cloudy, rainy and snowy weathers.
- Use LED in big degree emitting angle of 120° to achieve even distribution of light.
- Input voltage: 12V DC, professionally designed to be fully waterproof.
- Low Power Consumption, 0.5W/20-90mA per piece.
- A standard packing of 100 pcs/strip.
- Energy efficient, long lifetime, virtually no maintenance.

Applications:

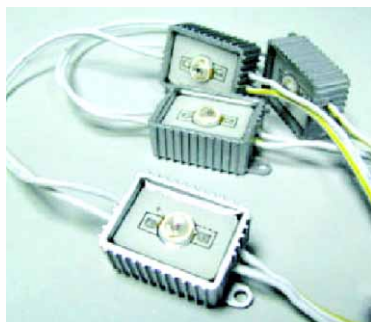
- Channel letters backlighting.
- Advertisement signs backlighting
- Advertisement light boxes and billboards backlighting
- Available in 3LEDs version with connector points.
- Low heat, high brightness works well under harsh conditions.



LWS 136

LED 1 watt BACKLIGHT MODULES

Lifeway High power back light is the latest product for back lighting, which is with 1 watt power chip as its light source. This product has aluminum housing and is sealed with glue (white or clear) to reach the ingress protection rating of 67(IP 67). And the application of aluminum base helps it to disperse heat quickly. It enjoys high brightness, low power consumption and long lifespan. It works at a low power voltage and is safe to use. All those advantages make high power back light as an ideal and safe product of signage for outdoor use with a dimension of 31 X24 X 13.5mm



LWS 138

Features:

- Available in different colours.
- With mounting holes for easy mounting.
- Low heat, high brightness works well under harsh conditions.
- It can be normally operated by all conditions.

LED BACKLIGHT MODULES

- It can be normally operated and never be colour fade.
- Connected by series using connector wire.
- LED used in wider degree emitting angle of 120° to achieve even distribution of light.
- Input voltage: 12V DC.
- Low Power Consumption, 0.5W/20-90mA per piece.
- Energy efficient, long lifetime, virtually no maintenance.

Applications:

- Indoor Channel letters backlighting.
- Advertisement signs backlighting for indoor use.
- Advertisement light boxes and billboards backlighting.

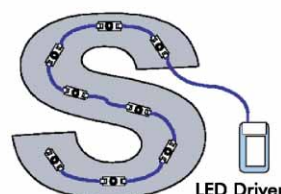


LWS 137

- 12VDC/320mA input Voltage.
- Fully waterproofed, capable for outdoor use.
- 50-90Lm light output helps a big degree emitting angle of 100° - 120°
- Low heat produced as less than 25°C temperature emission.
- Low voltage, energy efficient, long life span, Virtually no maintenance.

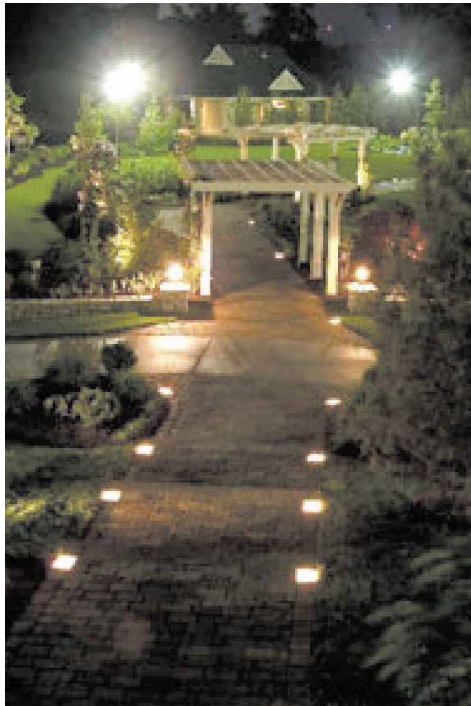
Applications:

- Channel letters backlighting.
- Advertisement signs backlighting
- Advertisement light boxes and billboards backlighting





LED PATH LIGHT



LED IN-GROUND FIXTURES

Lifeway in-Ground uplight mostly used for residential, office, auditorium, shopping malls, walk ways, driveways, public walk ways and other municipal locations; in gardens and parks as accent uplighting of trees and shrubs. Many have installed these in step lights at night clubs and theatres, in concrete and stone walls that have steps.

In-Ground fixtures are used both Indoor and Outdoor installations. They are depending upon the Ingress Protection which mentioned in the specified products. In-ground fixtures are mainly classified as their performance, usages and where they installed. They are also available in different varieties like Path Lights, Foot Lights and Stair Lights etc.

PATH LIGHT

Taking an enchanting moonlight walk along your carefully manicured walkways and pathways can be a challenge without the helpful guidance of Lifeway Walkway Lights or Path Lights. Even when the moon is full, there may not be enough light to prevent you or your companion from accidentally stepping off of the path and squashing flowers or other plants that grow quietly on either side of the road. Enchanting moonlit walks aside, lighting your walkways and path ways with Outdoor Lighting simply makes sense for safety reasons. Walkway and Path Lights can help guide visiting guests, family members, and even yourself along the safest route. Additionally, Walkway and Path Lights can add an additional layer of security to your home by helping to deter intruders. Many styles of Walkway and Path Lighting are available to complement your home's exterior, and the choice and placement of your lighting fixtures can suit your unique landscape and personal tastes.



LWS 139

Model No. LWS 139

- In-ground Outdoor LED Fixture
- 1 x 1 w Power Consumption
- 12VDC Input Supply
- 8°, 25°, 45° Emitting Angle
- IP 65 Ingress Protection
- Less than 25°C Surface Temperature



LED PATH LIGHT



LWS 140

- Stainless Steel Face Cover, Aluminum Body with Plastic Cover and Toughened Glass
- 50 - 90Lm Light Output
- Lifespan:- 50,000hrs for White LEDs
- 1,00,000hrs for other LEDs
- Dimension:- Ø58 X Ø43 X 63 mm

Model No. LWS 140

- Stainless Steel & Aluminum Finish In-ground LED Fixture
- 3 x 1 w Power Consumption
- 12-24VDC Input Supply
- 8°, 25°, 45° Emitting Angle
- IP 65 Ingress Protection
- Less than 25°C Surface Temperature
- 150 - 270Lm Light Output
- Lifespan:- 50,000hrs for White LEDs
- 1,00,000hrs for other LEDs
- Dimension:- Ø80 X Ø62 X 65mm



LWS 141

Model No. LWS 141

- Outdoor In-ground Inbuilt LED Round Fixture
- 3 x 1 w Power Consumption
- 12-24VDC Input Supply
- 8°, 25°, 45° Emitting Angle
- Stainless Steel Face Cover, Aluminum Body with Plastic Cover and Toughened Glass
- IP 67 Ingress Protection
- Less than 25°C Surface Temperature
- 150 - 270Lm Light Output

- Lifespan:- 50,000hrs for White LEDs
- 1,00,000hrs for other LEDs
- Dimension:- Ø100 X Ø63 X 130mm

Model No. LWS 142

- Outdoor In-ground LED Fixture
- 1 x 1 w Power Consumption
- 12VDC Input Supply
- 120° Emitting Angle
- Stainless Steel Housing & Aluminum Body with Acrylic Cover.
- IP 67 Ingress Protection
- Less than 25°C Surface Temperature
- 50 - 90Lm Light Output
- Lifespan:- 50,000hrs for White LEDs
- 1,00,000hrs for other LEDs
- Dimension:- 43 X 43 X Ø60 X 63mm



LWS 142



LED FOOT LIGHT



Foot lights are installed in both indoor and outdoor applications. They help us to get a clear vision to the entire portion where the fixtures are installed. These are also used as decorative section lightings. The power consumption of these LED based light is very low, so that they do not increase your light bills. At the same time their performance is much efficient than the other lighting devices.



LWS 143

Model No. LWS 143

- LED In-ground Rectangular Foot Light
- 1 x 1 w Power Consumption
- 12VDC Input Supply
- Aluminum Die-Cast and Plastic Cover with T-Glass
- IP 65 Ingress Protection
- Less than 25°C Surface Temperature
- 50 - 90Lm Light Output
- Lifespan:- 50,000hrs for White LEDs
- 1,00,000hrs for other LEDs
- Dimension:- 167 X 107 X 85mm

Model No. LWS 144

- LED In-ground Rectangular Foot Light
- 1 x 1 w Power Consumption
- 12VDC Input Supply
- Aluminum Die-Cast and Plastic Cover with T-Glass
- IP 65 Ingress Protection
- Less than 25°C Surface Temperature
- 50 - 90Lm Light Output
- Lifespan:- 50,000hrs for White LEDs
- 1,00,000hrs for other LEDs
- Dimension:- 167 X 107 X 85mm



LWS 144



LED FOOT LIGHT



LWS 145

Model No. LWS 145

- LED In-ground Foot Light
- 1 x 1 w Power Consumption
- 12VDC Input Supply
- Aluminum Die-Cast with Glass
- IP 65 Ingress Protection
- Less than 25°C Surface Temperature
- 50 - 90Lm Light Output
- Lifespan:- 50,000hrs for White LEDs
- 1,00,000hrs for other LEDs
- Dimension:- 90 X 60 X 90mm

Model No. LWS 146

- LED In-ground Square Foot Light
- 1 x 1 w Power Consumption
- 12VDC Input Supply
- Stainless Steel, Aluminum Body and Plastic Cover with Toughened Glass
- IP 65 Ingress Protection
- Less than 25°C Surface Temperature
- 50 - 90Lm Light Output
- Lifespan:- 50,000hrs for White LEDs
- 1,00,000hrs for other LEDs
- Dimension:- 70 X 70 X 55mm



LWS 146



LWS 147

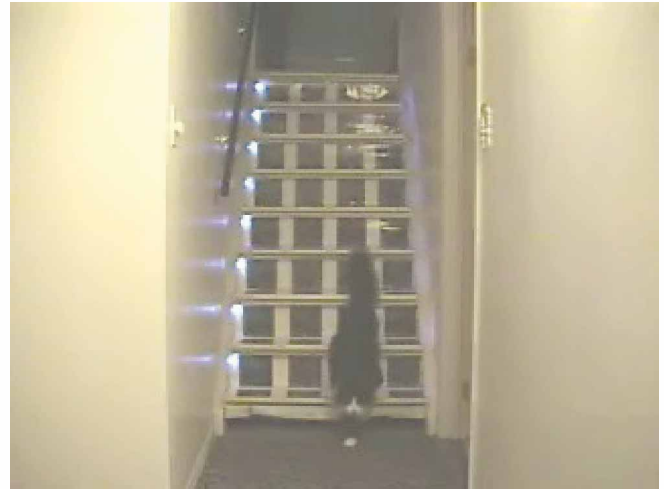
Model No. LWS 147

- LED In-ground Square Grilled Foot Light
- 1 x 1 w Power Consumption
- 12VDC Input Supply
- Stainless Steel, Aluminum Body with Plastic Cover
- IP 65 Ingress Protection
- Less than 25°C Surface Temperature
- 50 - 90Lm Light Output
- Lifespan:- 50,000hrs for White LEDs
- 1,00,000hrs for other LEDs
- Dimension:- 70 X 70 X 55mm



LED STAIR LIGHT

Stair lights are mostly used in an application of the stairway accent lighting. They will give the sufficient light to the staircase and do not interfere the other portions of the room. It will work silently but performed as a most useful device. These products spread the lights only to the stairways by the help of its special design. It can be easily installed on the concrete and wood based stairways. These products are giving the light sources by LEDs, so that it helps to save the electric energy.



LWS 148

Model No. LWS 148

- LED Surface Square Stair Light
- 1 x 1 w Power Consumption
- 12VDC Input Supply
- Aluminum Die-Cast with Plastic cover.
- IP 65 Ingress Protection
- Less than 25°C Surface Temperature
- 50 - 90Lm Light Output
- Lifespan:- 50,000hrs for White LEDs
- 1,00,000hrs for other LEDs
- Dimension:- 105 X 105 X 42mm

Model No. LWS 149

- LED Surface Square Stair Light
- 1 x 1 w Power Consumption
- 12VDC Input Supply
- Aluminum Die-Cast with Plastic Cover.
- IP 65 Ingress Protection
- Less than 25°C Surface Temperature
- 50 - 90Lm Light Output
- Lifespan:- 50,000hrs for White LEDs
- 1,00,000hrs for other LEDs
- Dimension:- 105 X 105 X 42mm



LWS 149



LED STAIR LIGHT



LWS 150

Model No. LWS 150

- LED Round Stair Light
- 1 x 1 w Power Consumption
- 12VDC Input Supply
- Aluminum Die-cast with T-Glass.
- IP 65 Ingress Protection
- Less than 25°C Surface Temperature
- 50 - 90Lm Light Output
- Lifespan:- 50,000hrs for White LEDs
- 1,00,000hrs for other LEDs
- Dimension:- Ø110 X 62mm

Model No. LWS 151

- LED Round Stair Light
- 1 x 1 w Power Consumption
- 12VDC Input Supply
- Aluminum Die-cast with T-Glass.
- IP 65 Ingress Protection
- Less than 25°C Surface Temperature
- 50 - 90Lm Light Output
- Lifespan:- 50,000hrs for White LEDs
- 1,00,000hrs for other LEDs
- Dimension:- Ø100 X 43mm



LWS 151

Model No. LWS 152

- LED Round Stair Light
- 1 x 1 w Power Consumption
- 12VDC Input Supply
- Aluminum Die-cast with T-Glass.
- IP 65 Ingress Protection
- Less than 25°C Surface Temperature
- 50 - 90Lm Light Output
- Lifespan:- 50,000hrs for White LEDs
- 1,00,000hrs for other LEDs
- Dimension:-Ø100 X 43mm



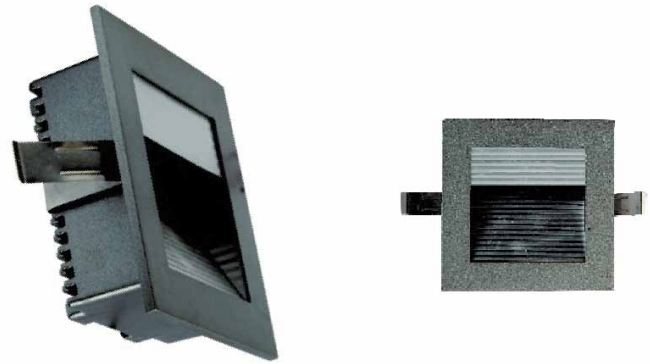
LWS 152



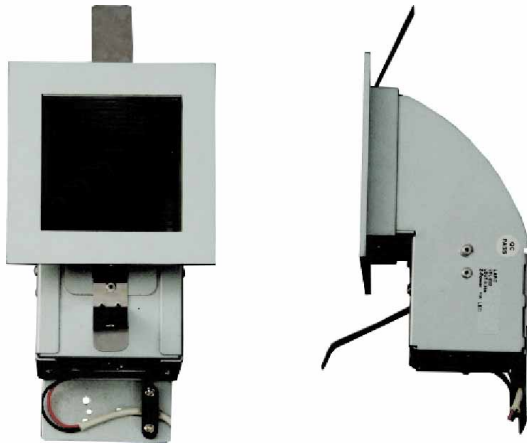
LED STAIR LIGHT

Model No. LWS 153

- Indoor In-ground Square Stair Light Fixture
- 1 x 1 w Power Consumption
- 12VDC Input Supply
- Full Aluminum Body
- Less than 25°C Surface Temperature
- 50 - 90Lm Light Output
- Lifespan:- 50,000hrs for White LEDs
- 1,00,000hrs for other LEDs
- Dimension:- 89 X 89 X 30mm



LWS 153



LWS 154

Model No. LWS 154

- Indoor In-ground Stair Light Fixture
- 1 x 1 w Power Consumption
- 12VDC Input Supply
- Full Aluminum body.
- Less than 25°C Surface Temperature
- 50 - 90Lm Light Output
- Lifespan:- 50,000hrs for White LEDs
- 1,00,000hrs for other LEDs
- Dimension:- 90 X 90 X 160mm



LWS 155

Model No. LWS 155

- Indoor In-ground Rectangular Stair Light Fixture
- 1 x 1 w Power Consumption
- 12VDC Input Supply
- Full Aluminum body.
- Less than 25°C Surface Temperature
- 50 - 90Lm Light Output
- Lifespan:- 50,000hrs for White LEDs
- 1,00,000hrs for other LEDs
- Dimension:- 310 X 80 X 235mm



LED SPOT LIGHT



Spot lights are multipurpose lights and also used as decorative lighting applications. The spot lights are based on LED light sources. It is energy savers and environment friendly lightings. These lights are installed as ceiling spot lights, surface mount spot lights, shelf spot lights, display spot lights and libraryspot lights etc. These lights have low power consumption and give a huge

light output. The LED based spot lights emits a nominal heat and do not produced IR & UR emission. These are also safe because it produces a low heat emission.



LWS 156

Model No. LWS 156

- 24 LEDs Recessed Plastic Spot Light
- 0.96w Power Consumption
- 240VAC / 50-60Hz Input Voltage
- 120° Emitting Angle
- Full Plastic Body
- Less than 25°C Surface Temperature
- 40Lm Light Output
- Lifespan:- 50,000hrs for White LEDs
- 1,00,000hrs for other LEDs
- Dimension:- Ø95 X Ø64 X Ø30 X 78mm

Model No. LWS 157

- 24 LEDs Recessed Plastic Spot Light
- 0.96w Power Consumption
- 240VAC / 50-60Hz Input Voltage
- 120° Emitting Angle
- Full Plastic Body
- Less than 25°C Surface Temperature
- 40Lm Light Output
- Lifespan:- 50,000hrs for White LEDs
- 1,00,000hrs for other LEDs
- Dimension:- Ø95 X Ø64 X Ø30 X 78mm



LWS 157



LED SPOT LIGHT

Model No. LWS 158

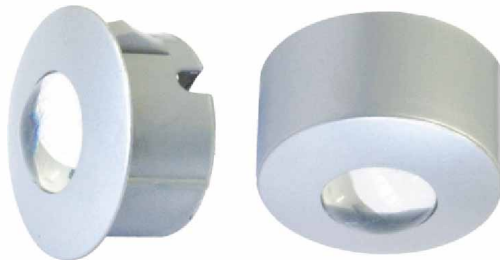
- Simple Installed Round LED Spot Light
- 1 x 1 w Power Consumption
- 12VDC Input Supply
- 110° Emitting Angle
- Thin Aluminum Material
- Less than 25°C Surface Temperature
- 50 - 90Lm Light Output
- Lifespan:- 50,000hrs for White LEDs
- 1,00,000hrs for other LEDs
- Dimension:- Ø30 X Ø25 X 17mm



LWS 158

Model No. LWS 159

- Simple Installed Round LED Spot Light
- 1 x 1 w Power Consumption
- 12VDC Input Supply
- 60° Emitting Angle
- Full Plastic Body
- Less than 25°C Surface Temperature
- 50 - 90Lm Light Output
- Lifespan:- 50,000hrs for White LEDs
- 1,00,000hrs for other LEDs
- Dimension:- Ø30 X Ø24 X 12mm



LWS 159

Model No. LWS 160

- Simple Installed Round LED Spot Light
- 1 x 1 w Power Consumption
- 12VDC Input Supply
- 140° Emitting Angle
- Full Plastic Body
- Less than 25°C Surface Temperature
- 50 - 90Lm Light Output
- Lifespan:- 50,000hrs for White LEDs
- 1,00,000hrs for other LEDs
- Dimension:- Ø30 X 11 mm



LWS 160



LED SPOT LIGHT



LWS 161

Model No. LWS 161

- LED Spot Light (Fixed)
- 1 x 1 w Power Consumption
- 12VDC Input Supply
- 8°, 25°, 45° Emitting Angle
- Full Aluminum Die-cast with Long Heat Sink.
- Less than 25°C Surface Temperature
- 50 - 90Lm Light Output
- Lifespan:- 50,000hrs for White LEDs
- 1,00,000hrs for other LEDs
- Dimension:- Ø50 X Ø40 X 40mm



LWS 162

Model No. LWS 162

- Adjustable LED Spot Light
- 1 x 1 w Power Consumption
- 12VDC Input Supply
- 8°, 25°, 45° Emitting Angle
- Full Aluminum Die-cast Body
- Less than 25°C Surface Temperature
- 50 - 90Lm Light Output
- Lifespan:- 50,000hrs for White LEDs
- 1,00,000hrs for other LEDs
- Dimension:- Ø56 X Ø46 X 38mm



LWS 163

Model No. LWS 163

- Adjustable LED Spot Light
- 1 x 1 w Power Consumption
- 12VDC Input Supply
- 8°, 25°, 45° Emitting Angle
- Full Aluminum Die-cast Body
- Less than 25°C Surface Temperature
- 50 - 90Lm Light Output
- Lifespan:- 50,000hrs for White LEDs
- 1,00,000hrs for other LEDs
- Dimension:- Ø60 X Ø46 X 36mm



LED SPOT LIGHT

Model No. LWS 164

- LED Spot Light
- 1 x 1 w Power Consumption
- 12VDC Input Supply
- 120° Emitting Angle
- Full Plastic Body
- Less than 25°C Surface Temperature
- 60Lm Light Output
- Lifespan:- 50,000hrs for White LE
- 1,00,000hrs for other LEDs
- Dimension:- Ø30 X Ø25 X 8mm



LWS 164

Model No. LWS 165

- LED Spot Light
- 1 x 1 w Power Consumption
- 12VDC / 350mA Input Supply
- 45° Emitting Angle
- Full Plastic Body
- Less than 25°C Surface Temperature
- 60Lm Light Output
- Lifespan:- 50,000hrs for White LEDs
- 1,00,000hrs for other LEDs
- Dimension:- Ø30 X Ø25 X 11 mm



LWS 165

Model No. LWS 166

- LED Spot Light
- 1 x 1 w Power Consumption
- 12VDC / 350mA Input Supply
- 60° Emitting Angle
- Full Plastic Body
- Less than 25°C Surface Temperature
- 60Lm Light Output
- Lifespan:- 50,000hrs for White LEDs
- 1,00,000hrs for other LEDs
- Dimension:- Ø30 X Ø25 X 11 mm



LWS 166

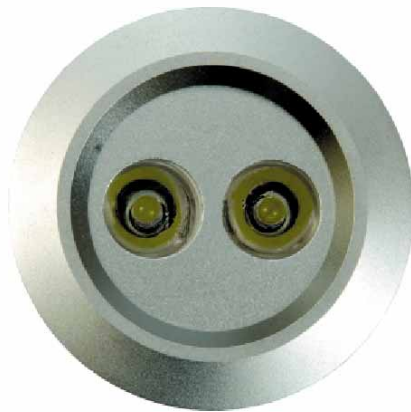


LED DOWN LIGHT



Down lights are installed as recessed type or embed type of ceiling portions. They are also have fixed and adjustable models. The designs of the products give a larger coverage of spreading light output.

It can be installed easily as per the dimensions that clearly mentioned in the product specification. Which helps incutting and installation procedure more easily.



LWS 167

Model No. LWS 167

- LED Down Light (Fixed)
- 2 x 1 w Power Consumption
- 12VDC Input Supply
- 8°, 25°, 45° Emitting Angle
- Full Aluminum Die-cast with Long Heat Sink.
- Less than 25°C SurFace Temperature
- 100 - 180Lm Light Output
- Lifespan:- 50,000hrs for White LEDs
- 1,00,000 hrs for other LEDs
- Dimension:- Ø77 X Ø61 X 45mm



LED DOWN LIGHT



LWS 168

Model No. LWS 168

- LED Down Light (Fixed)
- 3 x 1 w Power Consumption
- 12VDC Input Supply
- 8°, 25°, 45° Emitting Angle
- Full Aluminum Die-cast with Long Heat Sink.
- 150 - 270Lm Light Output
- Lifespan:- 50,000hrs for White LEDs
- 1,00,000hrs for other LEDs
- Dimension:- Ø78 X Ø62 X 48mm

Model No. LWS 169



LWS 169

Model No. LWS 169

- Fixed Square LED Down Light
- 3 x 1 w Power Consumption
- 12VDC Input Supply
- 8°, 25°, 45° Emitting Angle
- Full Aluminum Die-cast Body
- Less than 25°C Surface Temperature
- IP 20 Ingress Protection
- 150 - 270Lm Light Output
- Lifespan:- 50,000hrs for White LEDs
- 1,00,000hrs for other LEDs
- Dimension:- 75 X 75 X Ø65 X 27.83mm



LED DOWN LIGHT



LWS 170

Model No. LWS 170

- Adjustable LED Down Light
- 7 x 1 w Power Consumption
- 12-24VDC Input Supply
- 8°, 25°, 45° Emitting Angle
- Full Aluminum Die-cast with Long Heat Sink.
- Less than 25°C Surface Temperature
- 350 - 630Lm Light Output
- Lifespan:- 50,000hrs for White LEDs
- 1,00,000hrs for other LEDs
- Dimension:- Ø132 X Ø115 X 67mm



LWS 171

Model No. LWS 171

- Adjustable LED Down Light
- 6 x 1 w Power Consumption
- 12-24VDC Input Supply
- 8°, 25°, 45° Emitting Angle
- Full Aluminum Die-cast with Long Heat Sink.
- Less than 25°C Surface Temperature
- 300- 540Lm Light Output
- Lifespan:- 50,000hrs for White LEDs
- 1,00,000hrs for other LEDs
- Dimension:- Ø132 X Ø100 X 64mm



LWS 172

Model No. LWS 172

- Adjustable LED Down Light
- 12 x 1 w Power Consumption
- 12-24VDC Input Supply
- 8°, 25°, 45° Emitting Angle
- Full Aluminum Die-cast with Long Heat Sink.
- Less than 25°C Surface Temperature
- 600 - 1080Lm Light Output
- Lifespan:- 50,000hrs for White LEDs
- 1,00,000hrs for other LEDs
- Dimension:- Ø180 X Ø90 X 90mm



LWS 173

Model No. LWS 173

- Beam Adjustable Square Four LED Down Light
- 4 x 1 w Power Consumption
- 24VDC Input Supply
- 8°, 25°, 45° Emitting Angle
- Full Aluminum Die-cast Body
- IP 20 Ingress Protection
- Less than 25°C Surface Temperature
- 200 - 360Lm Light Output
- Lifespan:- 50,000hrs for White LEDs
- 1,00,000hrs for other LEDs
- Dimension:- 110 X 105 X 23.5mm



LED DECORATIVE LIGHT



LWS 174

Model No. LWS 174

- LED Waterproof Decorative Light
- 0.16w Power Consumption
- 12VDC Input Supply
- 45° Emitting Angle
- IP 65 Ingress Protection
- 4 Normal Dome LEDs in One Lamp
- Stain Nickle Finish Body
- Lifespan:- 50,000hrs
- Dimension:- Ø32 X 19mm



LWS 175

Model No. LWS 175

- LED Waterproof Decorative Boarder Light
- 0.12w Power Consumption
- 12VDC Input Supply
- 120° Emitting Angle
- IP 65 Ingress Protection
- 3 Normal Dome LEDs in One Lamp
- White Acrylic Body
- Lifespan:- 50,000hrs
- Dimension:- Ø22 X 15mm



LWS 176

Model No. LWS 176

- LED Waterproof Transparent Light
- 0.12w Power Consumption
- 12VDC Input Supply
- 120° Emitting Angle
- IP 65 Ingress Protection
- 3 Normal Dome LEDs in One Lamp
- Plastic Transparent Body
- Lifespan:- 50,000hrs
- Dimension:- Ø24 X 15mm



LED WALL LAMPS

LED Wall Lamps

Fixing lights to the wall provides a new dimension to lighting. They can be used as decorative features or to provide general light to the room. They can provide light both up and down the walls, as well as specialist tasks such as picture lighting. The style ranges from the traditional to contemporary.

Low level wall lights provide an alternative to standard lighting, providing pathways of light through corridors and in almost any location.



LWS 177

Model No. LWS 177

- 2in 1 - LED Shade Lamp
- 1 x 1w Power Consumption
- 12VDC Input Supply
- 8°, 25°, 45° Emitting Angle
- Stainless Steel Body
- IP 20 Ingress Protection
- Less than 25°C Surface Temperature
- 50 - 90Lm Light Output
- Lifespan:- 50,000hrs for White LEDs
- 1,00,000hrs for other LEDs
- Dimension:- 193 X 137 X 77mm



LWS 178

Model No. LWS 178

- Square Wall LED Info Light Fixture
- 1 x 1w Power Consumption
- 12VDC Input Supply
- 30° Emitting Angle
- Aluminum Die-cast Body
- IP 20 Ingress Protection
- Less than 25°C Surface Temperature
- 50 - 90Lm Light Output
- Lifespan:- 50,000hrs for White LEDs
- 1,00,000hrs for other LEDs
- Dimension:- 90 X 90 X 33 X 70mm



LED WALL LAMPS



LWS 179

Model No. LWS 179

- Adjustable Round LED Wall Light
- 1 x 1w Power Consumption
- 12VDC Input Supply
- Aluminum Body
- Less than 25°C Surface Temperature
- IP 20 Ingress Protection
- 50 - 90Lm Light Output
- Lifespan:- 50,000hrs for White LEDs
- 1,00,000hrs for other LEDs
- Dimension:- Ø45 X Ø38 X 33.3mm



Model No. LWS 180

- Round LED Wall Light
- 1 x 1w Power Consumption
- 12VDC Input Supply
- Aluminum and Acrylic
- Less than 25°C Surface Temperature
- IP 20 Ingress Protection
- 50 - 90Lm Light Output
- Lifespan:- 50,000hrs for White LEDs
- 1,00,000hrs for other LEDs
- Dimension:- Ø45 X Ø38 X 40mm



LWS 180



LED WALL LAMPS



LWS 181

Model No. LWS 181

- LED Flexible Wall Lamp
- 1 x 1w Power Consumption
- 100 - 240VAC / 50-60Hz Input Supply
- 8°, 25°, 45° Emitting Angle
- Brass, Mild Steel & Aluminum Body
- Less than 25°C Surface Temperature
- 50 - 90Lm Light Output
- Lifespan:- 50,000hrs for White LEDs
- 1,00,000hrs for other LEDs
- Dimension:- Ø30 X 400mm
65 X 40 X 35mm

Model No. LWS 182

- Surface Mount Flexible LED Fixture
- 1 x 1w Power Consumption
- 12VDC Input Supply
- 8°, 25°, 45° Emitting Angle
- Brass, Mild Steel & Aluminum Body
- Less than 25°C Surface Temperature
- 50 - 90Lm Light Output
- Lifespan:- 50,000hrs for White LEDs
- 1,00,000hrs for other LEDs
- Dimension:- Ø65 X Ø25 X 375mm



LWS 182



LWS 183

Model No. LWS 183

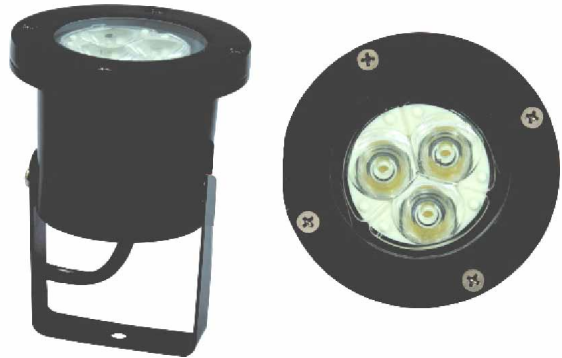
- 14 LEDs Flexible Wall Lamp with 1.5mtr cable
- 1 . 2 w Power Consumption
- 12VDC Input Supply
- Input Source as 12 VAC/DC Adaptor
- 120° Wide Emitting Angle
- Iron Body and ABS Plastic Base
- Less than 25°C Surface Temperature
- 50 - 90Lm Light Output
- Lifespan: - 50,000+ hrs
- Dimension:- Ø55 X 485mm



LED OUTDOOR FIXTURES

Model No. LWS 184

- Outdoor LED Surface Spot Light with Bracket
- 3 x 1w Power Consumption
- 12-24VDC Input Supply
- 8°, 25°, 45° Emitting Angle
- Aluminum Die-cast Body with T-Glass
- IP 67 Ingress Protection
- Less than 25°C Surface Temperature
- 150 - 270Lm Light Output
- Lifespan:- 50,000hrs for White LEDs
- 1,00,000hrs for other LEDs
- Dimension:- Ø92 X 100mm



LWS 184

Model No. LWS 185

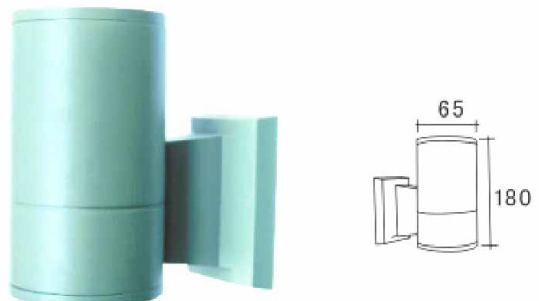
- LED Surface Spot Light
- 3 x 1w Power Consumption
- 12-24VDC Input Supply
- 8°, 25°, 45° Emitting Angle
- Aluminum Die-cast Body
- IP 60 Ingress Protection
- Less than 25°C Surface Temperature
- 150 - 270Lm Light Output
- Lifespan:- 50,000hrs for White LEDs
- 1,00,000hrs for other LEDs
- Dimension:- Ø98 X 95mm



LWS 185

Model No. LWS 186

- Up Side LED Round Wall Lamp
- 3 x 1w Power Consumption
- 12-24VDC Input Supply
- 8°, 25°, 45° Emitting Angle
- Aluminum Die-cast Body
- IP 60 Ingress Protection
- Less than 25°C Surface Temperature
- 150 - 270Lm Light Output
- Lifespan:- 50,000hrs for White LEDs
- 1,00,000hrs for other LEDs
- Dimension:- Ø65 X 180mm



LWS 186



LED OUTDOOR FIXTURES



LWS 187

Model No. LWS 187

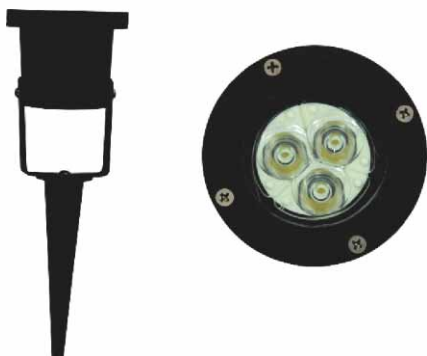
- Adjustable LED Spot Light
- 3 x 1w Power Consumption
- 12-24VDC Input Supply
- 8°, 25°, 45° Emitting Angle
- Aluminum Die-cast Body
- IP 67 Ingress Protection
- Less than 25°C Surface Temperature
- 150 - 270Lm Light Output
- Lifespan:- 50,000hrs for White LEDs
- 1,00,000hrs for other LEDs
- Dimension:- Ø64 X Ø64 X 100mm



LWS 188

Model No. LWS 188

- LED Hi-Light Spot Fixture
- 3 x 1w Power Consumption
- 12-24VDC Input Supply
- 8°, 25°, 45° Emitting Angle
- Aluminum Die-cast Body
- IP 65 Ingress Protection
- Less than 25°C Surface Temperature
- 150 - 270Lm Light Output
- Lifespan:- 50,000hrs for White LEDs
- 1,00,00hrs for other LEDs
- Dimension:- Ø100 X Ø95 X 135 X 142mm



LWS 189

Model No. LWS 189

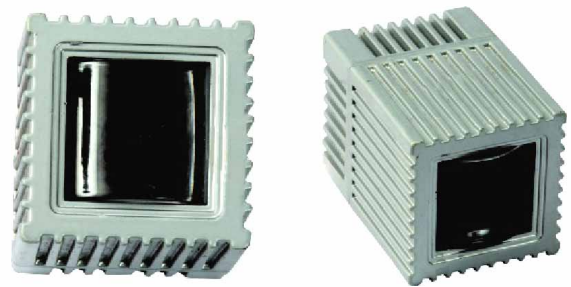
- Outdoor LED Spot Light with Spike
- 3 x 1w Power Consumption
- 12-24VDC Input Supply
- 8°, 25°, 45° Emitting Angle
- IP 67 Ingress Protection
- Aluminum Die-cast Body with T-Glass and ABS Plastic Spike
- 150 - 270Lm Light Output
- Lifespan:- 50,000hrs for White LEDs
- 1,00,000hrs for other LEDs
- Dimension:- Ø100 X 100 mm



LED BLITZ LIGHTS

Model No. LWS 190

- LED Square Surface mount Fixture
- 1 x 1w Power Consumption
- 12VDC Input Supply
- Inbuilt Lens
- Full Aluminum Die-cast Body
- IP 65 Ingress Protection
- Less than 25°C Surface Temperature
- 50 - 90Lm Light Output
- Lifespan:- 50,000hrs for White LEDs
- 1,00,000hrs for other LEDs
- Dimension:- 63 X 63 X 89mm



LWS 190

Model No. LWS 191

- LED Rectangular Surface mount Fixture
- 2 x 1w Power Consumption
- 12VDC Input Supply
- Inbuilt Lens
- Aluminum Die-cast Body
- IP 65 Ingress Protection
- Less than 25°C Surface Temperature
- 100 - 180Lm Light Output
- Lifespan:- 50,000hrs for White LEDs
- 1,00,000hrs for other LEDs
- Dimension:- 310 X 73 X 80mm



LWS 191

Model No. LWS 192

- Star Type Surface mount LED Fixture
- 4 x 1w Power Consumption
- 24VDC Input Supply
- Inbuilt Lens
- Aluminum Die-cast Body
- IP 65 Ingress Protection
- Less than 25°C Surface Temperature
- 200 - 360Lm Light Output
- Lifespan:- 50,000hrs for White LEDs
- 1,00,000hrs for other LEDs
- Dimension:- 335 X 70 X 80mm



LWS 192

A comparative study between Zero Watt Bulb and LED Bulb

- Ordinary Zero Bulb is not a zero bulb; it is a 10-15 watt bulb!
- Philips/Osrams/ etc. brand Zero bulbs are consuming 10 to 15 Watt
- Power consumption per day = 10 W x 24 Hrs =240 WH =0.24 Units
- Power consumption per year = 0.24 Units x 365 days =87.60 Unit
- Energy cost per unit = 87.60 units @ Rs.9/- =Rs. 788.40

Light Emitting Diode (LED) an energy saver

- 8 nos. of 5 mm LED Bulb consuming 2.5 Watt
- Power consumption per day = 2.5 W x 24 Hrs = 60 WH = 0.060 Units
- Power consumption per year = 0.060 Units x 365 days = 21.9 Unit
- Energy cost per unit = 21.9 units @ Rs. 9/- = Rs. 197.10

Saving per year: Rs.788.40 (So called Zero Watt) - Rs.197.10 (2 watt LED bulb) = Rs. 591.30

A study on KERALA STATE 's Zero Watt bulb Market.

Kerala State consumers are using 8 lakhs Zero watt bulbs every year, So if it is replaced with 2 Watt LED Bulbs then the Kerala Govt. can save 13Watt x 8 lakhs x 24Hrs x 365 days = 9.11 M watt Power.

To produce One M watt power either by Hydel or by using fossil fuels like Coal, Oil, Gas etc. the Govt. is spending around Rs. 6 Crore. So the savings for the state in a year by using **LED bulbs will be 9.11 M watt x Rs. 6 Crore = 54.66 Crore.**

India's Installed Power Generation Capacity in MW : 2006

State Region	Thermal Power			Hydro	Nuclear	RES	Grand Total
	Coal	Gas	Diesel				
Northern Region	17592.50	3213.19	14.99	11061.88	1180.00	694.59	33757.15
Western Region	20941.50	5080.72	17.48	6681.33	1300.00	1098.83	35119.86
Southern Region	15962.50	3449.30	939.32	10967.71	880.00	4233.49	36432.32
Eastern Region	13662.33	190.00	17.20	2496.53	0.00	111.61	6477.78
Northern - Eastern Region	330.00	771.50	142.74	1113.07	0.00	46.86	2404.17
Islands	0.00	0.00	70.02	5.25	0.00	5.42	80.69
All India Total	68488.88	12704.71	1201.75	32325.77	3360.00	6190.86	124271.97



sun driven

Lifeway Solar Devices Pvt. Ltd.

Lifeway Center, Azad Road, Cochin 682 017, Kerala, India.

Tele. 0091 484 234 6376, 324 5590

e-mail: info@lifewaysolar.com www.lifewaysolar.com

Overseas Office

Lugo Strasse 14, Freiburg 79100, Germany. Tel: 0049 172 704 9650